



BAURAL

SF2000T Silager

**HIGH-TECH MACHINES FOR AGRONOMIC
RESEARCH AND SEED PRODUCTION**



Harvesters



Comfort and functionnality

A simple plot and multi-varieties silager designed to meet your needs

- Completely suited and developed by BAURAL
- Efficient and robust design
- Powerful engine and transmission
- Fast row-edging
- Quick silage and cleaning avoiding mixture
- Efficient header and chopper
- Panoramic cabin
- Storage hopper with large floor conveyor
- Possibility of emptying the hopper during harvest
- Daily reduced maintenance
- Transport as normalized size
- Authorize to drive on french roads

Powerful engine

- JOHN DEERE Stage V (254ch, 187KW)
- In accordance with applicable standards
- Total access for maintenance
- Electronic control board inside the cabin
- Engine rotational speed already programed (800 – 1300 – 1800 – 2200 r.p.m.) (Optional)
- Subdued rear door to cool engine down

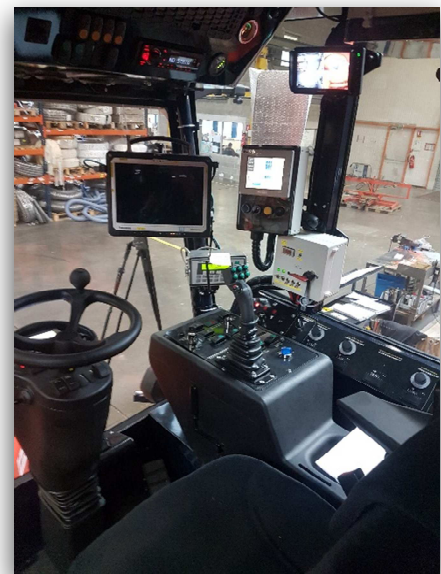




Cabin and transmission

Panoramic view

- Great visibility at 191° with an access on the left
- Heating and air conditioning
- Ventilation and filtered pressurization
- Pneumatic seat and tilting steering
- Foldable ladders
- Multi-function lever (forwarding command and header lifting)
- Close to hand disposition
- Large size rear-view mirrors and large windscreen wiper
- Front lights
- Spacious cabin for driver and operator



Transmission

- POCLAIN hydraulic wheel engine installed on a solid frame
- Fixation for transport
- 4 gears (front drive axle in option)
- SAUER hydrostatic pump
- Large tyres which allow harvesting in all conditions
- Hydrostatic direction on axle for a better stability
- Road speed of 25 km/h (limited at 20km/h in Germany)
- Park break with electric command (progressive with manual command in option)
- Rotative sieve to cool hydraulic system down



Weighing and sampling equipment

Weighing system

Foldable cyclone

Weighing hopper of 500 liters

Weighing area with 4 stainless-steel sensors (500 kg maxi)

Weighing indicator with quick stability

Access and control from driver's seat

Pneumatic system for door opening



Analysis system

Carrying strip with adjustable speed for spectrometry analysis

Endless screw with adjustable speed to homogenize silage on the carrying strip (optional)

Controller for a stable silage height (adjustable height and speed)

Silage compression roller (adjustable height and speed) (optional)

Industrial spectrometer NIRS

Cycle's management by PLC

Computer and harvest software (optional)



Sampling equipment

Variable speed sampler with inverter

Sampling before or after the weighing (to define)

Sampling storage tank with an outside access





Central blower and hopper

Central blower

Blower with 8 removable blades

Outside made in anti-abrasion steel

Hydrostatic functioning (power 80 kW) with two speeds, depending on the use

« Skipped roll », with two modes:

OFF: Silage kept in the hopper

ON: Unloading of the silage outside the hopper

Hydraulic functioning with inverter

Foldable and rotating at 210° chute with hydraulic command

Adjustable reflector hydraulically operated

Control camera on the chute (optional)



Hopper with floor conveyor

Floor conveyor with chains and bars

Hydraulic functioning (with inverter)

Adjustable forwarding speed

Double watertightness bottom with cleaning trapdoor

Large hopper (8 m³)

Rear door for hopper cleaning

Hopper extension with hydraulic folding

Reversing camera for maneuver (optional)





Header and chopper

Corn header

SF-CH125 ÇELMAK

Row spacing for corn at 70 to 80 cm

2 intake drums

2 pressure rollers

Foldable chute for transport

Lateral auger (optional)



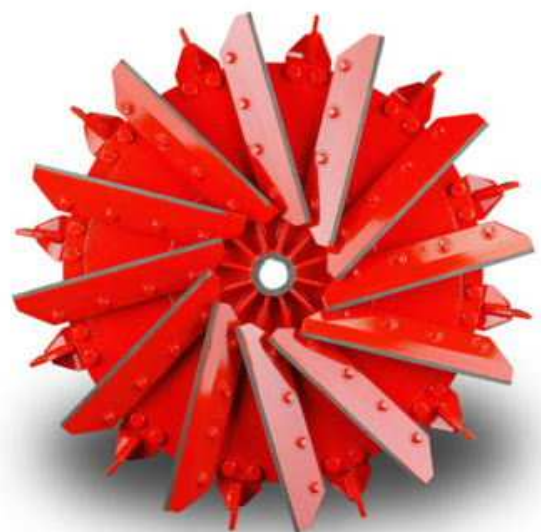
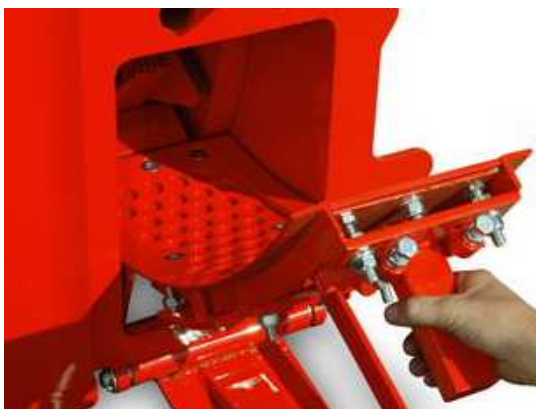
Powerfull mincing

1180 r.p.m. chopping wheel

12 tunsten carbide coated blades

Hydrostatic drive (power of 80 kW)

Grains crusher





Features

Engine and transmission

JOHN DEERE Stage V (254ch, 187kw)
 Fuel tank of 365 liters
 Hydraulic tank of 185 liters
 Hydraulic transmission with double volumetric size engine
 Speed on road 0 to 25 km/h
 Speed on field 0 to 12 km/h
 Front tyres : 380 / 70 R 20
 Rear tyres : 540 / 65 R 28

Silage unit

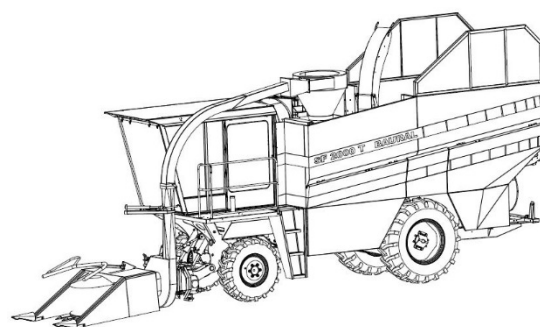
Hydrostatic transmission
 12 blades chopping wheel
 Rotor speed at 1 180 r.p.m.
 Reversible shear bar
 Grains crusher
 Adjustable chopping length

Electricity

Main circuit : 12 Volt
 Secondary circuit : 12 Volt
 Traffic and road lights
 Front working lights
 1 reverse light
 1 light on the lateral chute
 Revolving lights
 Cycle PLC

Storage hopper

Draining discharger with rotating chute on 210°
 Storage hopper of 8m³
 Hopper's emptying in less than 3 minutes



Weighing equipments

Retractable decompression cyclone
 Weighing hopper (500 liters)
 4 stainless steel sensors IP65
 1 indicators with quick stability
 Solenoid valves and pneumatic command cylinders
 Rotating sampler with chain and inverter with adjustable speed
 Resumption hopper

Dimensions

Total length with the header : 9,65 m
 Width : 2,25 m
 Wheelbase : 3,40 m
 Height (transport) : 3,10 m
 Total weight with header and options : 9 300 kg
 Height from ground : 0,40 m

Options

Engine 238 ch 175 kW : 6 cylinders « common rail »
 Rear hydraulic motor
 Air conditioning / Heating
 Sampling system
 Air compressor with 100 Liters tank
 Pneumatic winder
 Removable light with cable on winder
 Speed and rotation controller
 Belt and controller for NIRS
 Industrial spectrometer - NIRS
 Data collector / Industrial computer
 Printer
 Large fuel tank : 500 litres
 Security cameras





Contact us

BAURAL

26 Rue du haut buisson

41330

Champigny-En-Beauce

France

+33 (0)2 54 33 11 01

Baural.contact@baural.fr

www.baural.fr

